

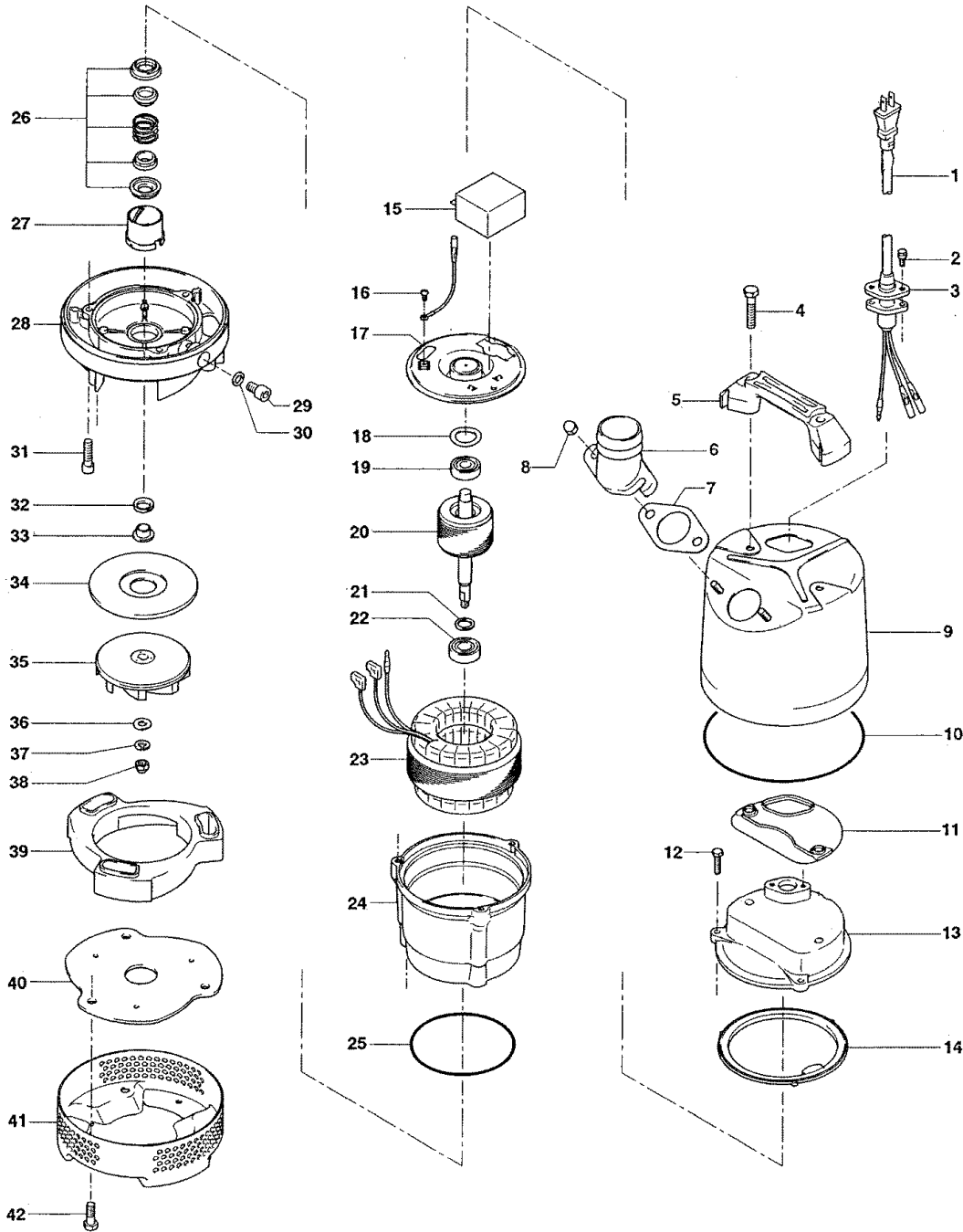
MODEL NO. : LB-480-53/63

CONTROL NO.	OUTPUT	VOLTAGE	DISCHARGE	-	-	DISCONTINUED IN
ILB(2)-18-1-1	0.48KW		50mm	-	-	

EXPLODED VIEW

LB-250/480-52/62

LB-250/480-53/63



MODEL NO. : LB-480-53/63

CONTROL NO.	OUTPUT	VOLTAGE	DISCHARGE	-	-	DISCONTINUED IN
ILB(2)-18-1-1	0.48KW		50mm	-	-	

No.	PARTS NO.	DESCRIPTION	Q'TY	SPECIFICATION	MATERIALS	WEIGHT(kg)
1	801-00124821-9	Cabtyre Cable Set (5m)220/230/240V-50Hz	1	VCT3Cx1.25mm2(CEE)	LB	
1	801-00101021-9	Cabtyre Cable Set (10m)220/230/240V-50Hz(AUS)	1	H07RNF3Gx1mm2(AUS-P)	LBD(HAR)	1.3
1	801-00184524-9	Cabtyre Cable Set (5m)220/230/240V-50Hz(THA)	1	VCT3Cx1.25mm2	TLB	
1	801-00124850-9	Cabtyre Cable Set (10m)220/230/240V-50Hz(RUS)	1	VCT3Cx1.25mm2(CEE)	LB	
2	801-14042717-9	Hex.Bolt (w/Plain Washer)	2	M5x15	SUS304	0.001
3	801-00319010-9	Gland	1		SUS316	0.01
4	801-14000013-9	Hex.Bolt (w/Plain Washer)	2	M8x65	SUS304	0.025
5	801-06800006-9	Handle	1	LB-250/480-52/62	Resin	0.101
6	801-03200012-9	Hose Coupling	1	50mm(LB-480-52/62)	ADC	0.11
7	801-12158717-9	Packing	1	LB-250/480-51/61	NBR	0.001
8	801-14114410-9	Hex.Nut (w/Flange)	2	M8	SUS304	0.008
9	801-06538213-9	Outer Cover	1	LB-250/480-51/61	SPC	1.2
10	801-12245316-9	O-Ring	1	172xd2.7	NBR	0.001
11	801-12100209-9	Packing	1	LB3-250/480(Hardness 50)	Synthetic Rubber	0.0113
12	801-14039616-9	Hex.Bolt (w/Plain Washer)	3	M6x20	SUS304	0.008
13	801-05128219-9	Head Cover	1		ADC	0.79
14	801-12154614-9	Packing	1	d120xd142x6.2t	NBR	0.02
15	801-07600035-9	Capacitor 220/230/240V-50Hz	1	SH-CAP,8MF-500VAC(three terminals)		
15	801-07600035-9	Capacitor 220/230/240V-50Hz(AUS)	1	SH-CAP,8MF-500VAC(three terminals)		
15	801-07600035-9	Capacitor 220/230/240V-50Hz(THA)	1	SH-CAP,8MF-500VAC(three terminals)		
15	801-07600035-9	Capacitor 220/230/240V-50Hz(RUS)	1	SH-CAP,8MF-500VAC(three terminals)		
16	801-14320314-9	Pan Screw	1	M4x5	C360	
17	801-05048612-9	Motor Bracket	1		SECD	
18	801-14219216-9	Wave Washer	1	6201(D=32,t=0.4)	SK5	0.001
19	801-05200031-9	Bearing	1	6201ZZC3(EP-1)		
20	801-05500029-9	Rotor	1Set	w/Bearing		
21	801-06118017-9	Bearing Collar	1	d15.1xd20x1.5t	SS	0.023
22	801-05200047-9	Bearing	1	6202ZZC3(EP-1)		
23	801-05600937-9	Stator 220/230/240V-50Hz	1Set	w/Miniature Protector		
23	801-05600937-9	Stator 220/230/240V-50Hz(AUS)	1Set	w/Miniature Protector		
23	801-05600937-9	Stator 220/230/240V-50Hz(THA)	1Set	w/Miniature Protector		
23	801-05600937-9	Stator 220/230/240V-50Hz(RUS)	1Set	w/Miniature Protector		
24	801-06450814-9	Motor Frame	1		ADC	1.2
25	801-12213317-9	O-Ring	1	G-110(109.4xd3.1)	NBR	0.001
26	801-02500082-9	Mechanical Seal	1	W-14VC(ROHS)	SSIC	0.05
27	801-03000009-9	Oil Lifter	1	W-14VL	Resin	0.009
28	801-02900070-9	Oil Casing	1	LB-250/480-51/61	ADC	1.02
29	801-03512412-9	Oil Plug	1	M10x15	SUS304	0.019
30	801-12124611-9	Packing	1	d10.3xd16x2t	PE	0.001
31	801-14025219-9	Hex.Socket Cap Bolt	3	M6x20	SUS304	0.001

MODEL NO. : LB-480-53/63

CONTROL NO.	OUTPUT	VOLTAGE	DISCHARGE	-	-	DISCONTINUED IN
ILB(2)-18-1-1	0.48KW		50mm	-	-	

No.	PARTS NO.	DESCRIPTION	Q'TY	SPECIFICATION	MATERIALS	WEIGHT(kg)
32	801-12244111-9	V-Ring	1	VR-14	NBR	0.001
33	801-07129214-9	Shaft Sleeve	1	LB3-250/480	SUS304	0.001
34	801-03100001-9	Wear Ring	1	LB-250/480-51/61	SPC+Rubber	0.052
35	801-02100743-9	Impeller (50Hz)	1	LB-480-53	Urethane Rubber	0.145
35	801-02100744-9	Impeller (60Hz)	1	LB-480-63	Urethane Rubber	0.14
36	801-14212710-9	Plain Washer	1	M8	SUS304	0.001
37	801-14216318-9	Spring Washer	1	M8	SUS304	0.001
38	801-14103012-9	Hex.Cap Nut	1	M8	SUS304	0.001
39	801-020B8919-9	Pump Casing	1	LB-250/480-51/61	Synthetic Rubber	0.25
40	801-02200128-9	Suction Cover	1	LB-250/480-52/62	SPC+Rubber	0.15
41	801-02354718-9	Strainer Stand	1	LB-250/480-51/61	SPCC	0.57
42	801-14000014-9	Hex.Bolt (w/Plain Washer)	3	M8x20	SUS304	
		<Packing O-Ring Set>				
	801-17356712-9	Packing O-Ring Set	1Set	(Marked by *)		0.055
7	801-12158717-9	Packing (Hose Coupling)	1	LB-250/480-51/61	NBR	0.001
10	801-12245316-9	O-Ring (Out.Cover/O.Casing)	1	172xd2.7	NBR	0.001
11	801-12100209-9	Packing (Out.Cover/Head Cover)	1	LB3-250/480(Hardness 50)	Synthetic Rubber	0.0113
14	801-12154614-9	Packing (Head Cover/M.Frame)	1	d120xd142x6.2t	NBR	0.02
25	801-12213317-9	O-Ring (M.Frame/M.Bracket)	1	G-110(109.4xd3.1)	NBR	0.001
30	801-12124611-9	Packing (Oil Plug)	1	d10.3xd16x2t	PE	0.001
		Lubricant		Turbine Oil VG32 155ml		