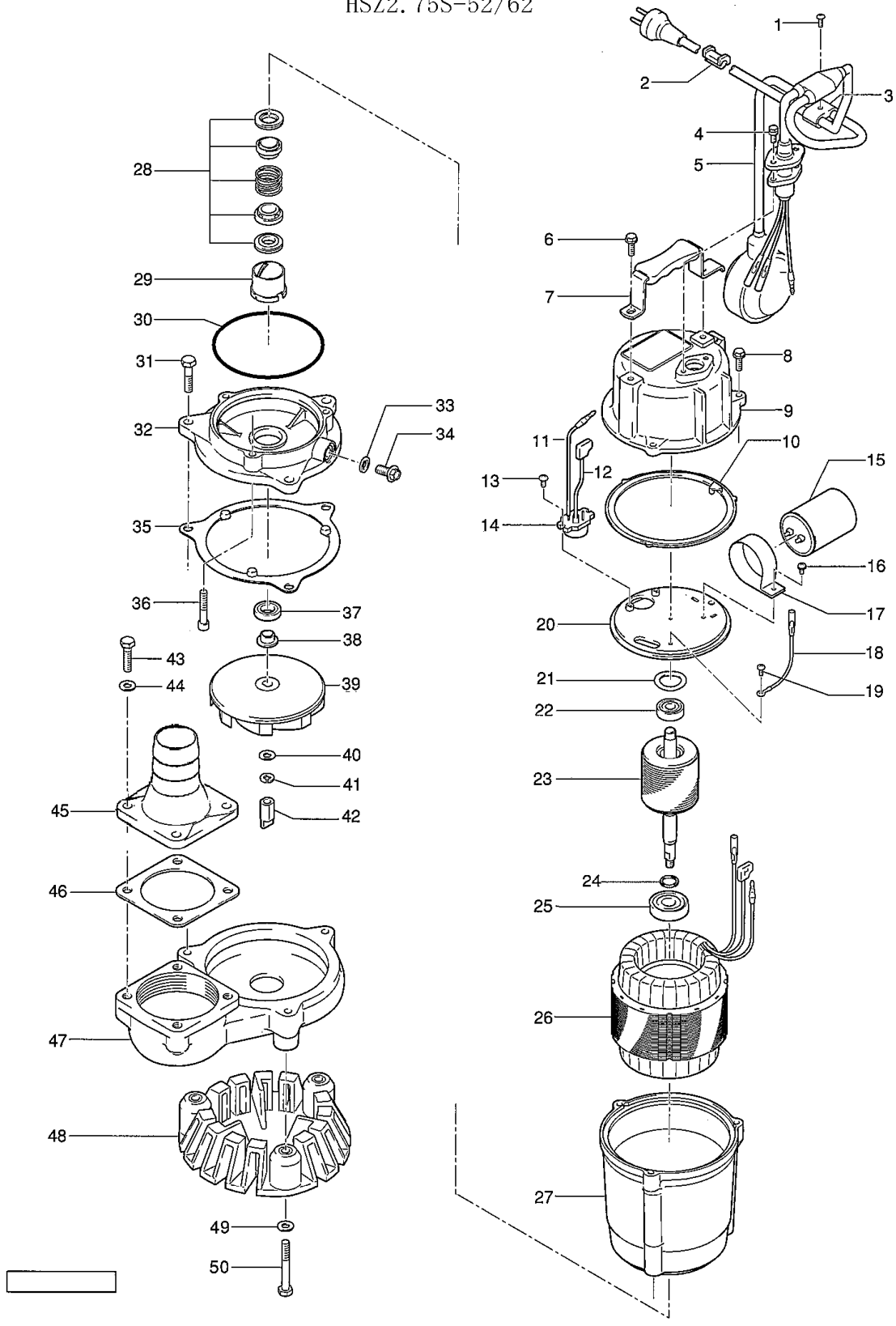


MODEL NO. : HSZ2.75S-52

CONTROL NO.	OUTPUT	VOLTAGE	DISCHARGE	-	-	DISCONTINUED IN
IHSZ-5-1-1	0.75KW		50mm	-	-	

# EXPLODED VIEW

HSZ2.75S-52/62



MODEL NO. : HSZ2.75S-52

CONTROL NO.	OUTPUT	VOLTAGE	DISCHARGE	-	-	DISCONTINUED IN
IHSZ-5-1-1	0.75KW		50mm	-	-	

No.	PARTS NO.	DESCRIPTION	Q'TY	SPECIFICATION	MATERIALS	WEIGHT(kg)
1	801-14300027-9	Tapping Pan Screw	1	M4x16	SUS304	0.002
2	801-01016316-9	Cable Clip Rubber	1	HS2.4S	NBR	0.003
3	801-10900011-9	Float Support Bush	1	d9/d9	Resin	0.006
4	801-14042717-9	Hex.Bolt (w/Plain Washer)	2	M5x15	SUS304	0.001
5	801-00100334-9	Cabtyre Cable Set (5m)110V-50Hz	1	VCT3Cx1.25mm2(CEE,w/Float)	LB	
5	801-00100334-9	Cabtyre Cable Set (5m)220/230/240V-50Hz	1	VCT3Cx1.25mm2(CEE,w/Float)	LB	
5	801-00101022-9	Cabtyre Cable Set (10m)220/230/240V-50Hz(AUS)	1	H07RNF3Gx1mm2(AUS-P,w/Float)	LBD(HAR)	1.4
1	801-00100677-9	Cabtyre Cable Set (10m)220/230/240V-50Hz(RUS)	1	VCT3Cx1.25mm2(CEE,w/Float)	LB	
6	801-14003237-9	Hex.Bolt	2	M6x15	SWRM	0.001
7	801-06827218-9	Handle	1	HS2.4(S)-50/60	SPC+NR	0.11
8	801-14039616-9	Hex.Bolt (w/Spring Washer/Plain Washer)	3	M6x20	SUS304	0.008
9	801-05100051-9	Head Cover	1	BLUE	ADC	
10	801-12100145-9	Packing	1	HS-750W	NBR	0.015
11	801-00900103-9	Intermediate Lead Wire	1Set	AWG16x160(red)		0.092
12	801-00900142-9	Intermediate Lead Wire	1Set	UL1015-AWG16x80(Indigo blue)		0.064
13	801-14300043-9	Truss Screw	2	M4x8	SWRM	0.002
14	801-05300133-9	Motor Protector 110V-50Hz	1	KA142-BBBL21F	(T.C)	0.014
14	801-05300189-9	Motor Protector 220/230/240V-50Hz	1	KA142-LPZL01F	(T.C)	0.014
14	801-05300189-9	Motor Protector 220/230/240V-50Hz(AUS)	1	KA142-LPZL01F	(T.C)	0.014
14	801-05300189-9	Motor Protector 220/230/240V-50Hz(RUS)	1	KA142-LPZL01F	(T.C)	0.014
15	801-07600043-9	Capacitor 110V-0Hz	1	250VAC-70MF		0.152
15	801-07600045-9	Capacitor 220/230/240V-50Hz	1	450VAC-16MF		0.149
15	801-07600045-9	Capacitor 220/230/240V-50Hz(AUS)	1	450VAC-16MF		0.149
15	801-07600045-9	Capacitor 220/230/240V-50Hz(RUS)	1	450VAC-16MF		0.149
16	801-14308521-9	Pan Screw (w/Spring Washer)(1st)	1	M4x6	SWRM	0.001
16	801-14308622-9	Pan Screw (w/Spring Washer)(2nd)	1	M4x8	SWRM	0.001
17	801-12700099-9	Capacitor Fixing Plate(2nd) 110V-50Hz	1	d51(1.0t)	SPC	0.03
17	801-12700100-9	Capacitor Fixing Plate(2nd) 220/230/240V-50Hz	1	d45(1.0t)	SPC	0.026
17	801-12700100-9	Capacitor Fixing Plate(2nd) 220/230/240V-50Hz(AUS)	1	d45(1.0t)	SPC	0.026
17	801-12700100-9	Capacitor Fixing Plate(2nd) 220/230/240V-50Hz(RUS)	1	d45(1.0t)	SPC	0.026
18	801-00900102-9	Earth Terminal	1Set	UL1015-AWG18,G/Y,L=160		0.067
19	801-14320314-9	Pan Screw (w/Spring Washer)	1	M4x5	C360	
20	801-05000112-9	Motor Bracket	1		ADC	0.145
21	801-14219216-9	Wave Washer	1	6201(D=32,t=0.4)	SK5	0.001
22	801-05210015-9	Bearing	1	6201ZZC3		0.037
23	801-05500289-9	Rotor	1Set	w/Bearing		2.11
24	801-06118017-9	Bearing Collar	1	d15.1xd20x1.5t	SS	0.023
25	801-05200106-9	Bearing	1	6302ZZC3(SRL)		0.083
26	801-05600814-9	Stator 110V-50Hz	1Set			5.443
26	801-05600816-9	Stator 220/230/240V-50Hz	1Set			5.423

MODEL NO. : HSZ2.75S-52

CONTROL NO.	OUTPUT	VOLTAGE	DISCHARGE	-	-	DISCONTINUED IN
IHSZ-5-1-1	0.75KW		50mm	-	-	
No.	PARTS NO.	DESCRIPTION	Q'TY	SPECIFICATION	MATERIALS	WEIGHT(kg)
26	801-05600816-9	Stator 220/230/240V-50Hz(AUS)	1Set			5.423
26	801-05600816-9	Stator 220/230/240V-50Hz(RUS)	1Set			5.423
27	801-06400124-9	Motor Frame	1	BLUE	ADC	
28	801-02500082-9	Mechanical Seal	1	W-14VC(ROHS)	SSIC	0.05
29	801-03000009-9	Oil Lifter	1	W-14VL	Resin	0.009
30	801-12213317-9	O-Ring	1	G-110(109.4xd3.1)	NBR	0.001
31	801-14005637-9	Hex.Bolt	3	M8x30	SWRM	
32	801-02900074-9	Oil Casing	1	HS3.75S/HS2.75S	FCD	1.9
33	801-12124611-9	Packing	1	d10.3xd16x2t	PE	0.001
34	801-03512412-9	Oil Plug	1	M10x15	SUS304	0.019
35	801-12100074-9	Packing	1	HS3.75S/HS2.75S	NR	0.02
36	801-14025626-9	Hex.Socket Cap Bolt	3	M6x35	SCM	0.01
37	801-12244111-9	V-Ring	1	VR-14	NBR	0.001
38	801-07129214-9	Shaft Sleeve	1	LB3-250/480	SUS304	0.001
39	801-02100754-9	Impeller (50Hz)	1	HSZ2.75S-52	Urethane Rubber	0.25
40	801-14212710-9	Plain Washer	1	M8	SUS304	0.001
41	801-14216318-9	Spring Washer	1	M8	SUS304	0.001
42	801-02417413-9	Agitator	1	HS2.4(S)(M8)	Sintered Alloy	0.024
43	801-14007633-9	Hex.Bolt	4	M10x30	SWRM	0.029
44	801-14212824-9	Plain Washer	4	M10	SPC	0.001
45	801-03211117-9	Hose Coupling	1	50mm(KTV)	ADC	0.4
45	801-03216529-9	Hose Coupling (for AUS)	1	50mm	Resin	0.06
45	801-03200076-9	Hose Coupling (for AUS)	1	KTZ21.5(50mm)	FC	0.92
	801-18100118-9	Hose Band	1	55mm(d50)	SWMG	0.03
46	801-12118117-9	Packing	1	KT-15	NBR	0.02
47	801-02000157-9	Pump Casing	1	HS3.75S/HS2.75S	FCD	4.4
48	801-02300208-9	Strainer Stand	1	HS2.75S/3.75S(ROHS)	PVC	0.55
49	801-14212723-9	Plain Washer	3	M8	SPC	0.001
50	801-14005738-9	Hex.Bolt	3	M8x35	SWRM	
		<Packing O-Ring Set>				
	801-17300327-9	Packing O-Ring Set	1Set	(Marked by *)		0.045
10	801-12100145-9	Packing (Head Cover/M.Frame)	1	HS-750W	NBR	0.015
30	801-12213317-9	O-Ring (M.Frame/O.Casing)	1	G-110(109.4xd3.1)	NBR	0.001
33	801-12124611-9	Packing (Oil Plug)	1	d10.3xd16x2t	PE	0.001
35	801-12100074-9	Packing (O.Casing/P.Casing)	1	HS3.75S/HS2.75S	NR	0.02
46	801-12118117-9	Packing (Hose Coupling)	1	KT-15	NBR	0.02
		Lubricant		Turbine Oil VG32 160ml		