

125 85.402.100

BAR Group Main Reel

FEATURES

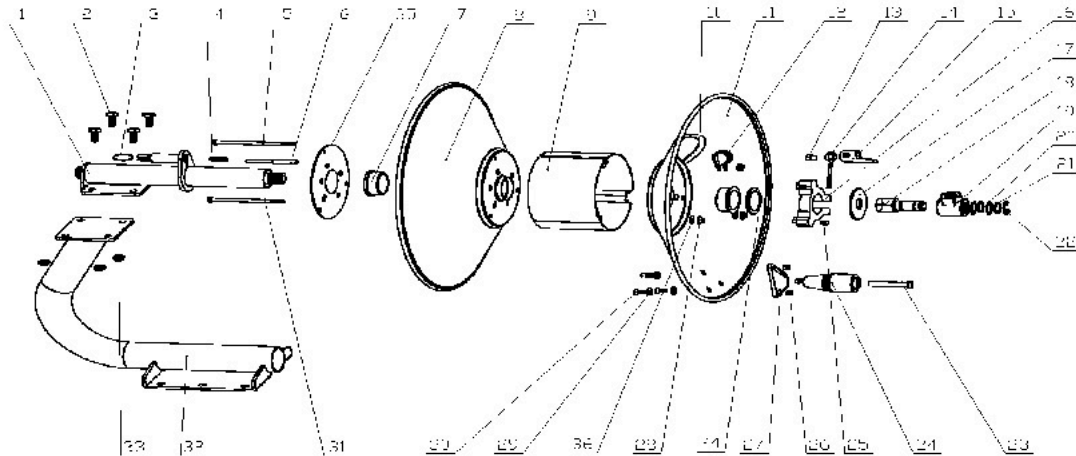
- Stainless steel nyloc fittings
- One year warranty
- Replacement for superceded 4418C Rapid Reel
- Parts kits available
- Simple operation and maintenance
- Built to ISO9001 Standards



SPECIFICATIONS

Model Number: **BAR4418C**
 Hose Capacity: 120m of 3/16" Jetting Hose
 120m of 1/4" Jetting Hose
 60m of 3/8" Jetting Hose
 Maximum Working Pressure: 6000 PSI

ASSEMBLY DRAWING



PARTS LIST

Part No.	Description	Qty	Part No.	Description	Qty	Part No.	Description	Qty
1	Inlet valve base	1	12	Pipe Hoop	1	24	Handle	1
2	Bolt M8*25	4	13	Lock Pin	1	25	Nut M5	1
3	Ring-pull	1	14	Draw-in bolt	1	26	Nut M6	3
4	Spring	1	15	Fastening Lock	1	27	Handle Base	1
5	Bolt M6*170mm	1	16	Locking Bed	1	28	Nut M6	3
6	Locating bearing	1	17	Washer	1	29	Washer	3
7	Spacer	1	18	Spool	2	30	Bolt M6*12	3
8	Flange A	1	19	Valve	1	31	Bolt M6*160	2
9	Swivel	3	20	O Ring Sealing	2	32	Supporting	1
10	Edge Protector	1	21	Detent Ring	2	33	Nut M8	4
11	Flange B	1	22	Split Washer	1	34	Wave pad	1
			23	Handle Shaft	1	35	Reinforcing plate	1
						36	Washer	3