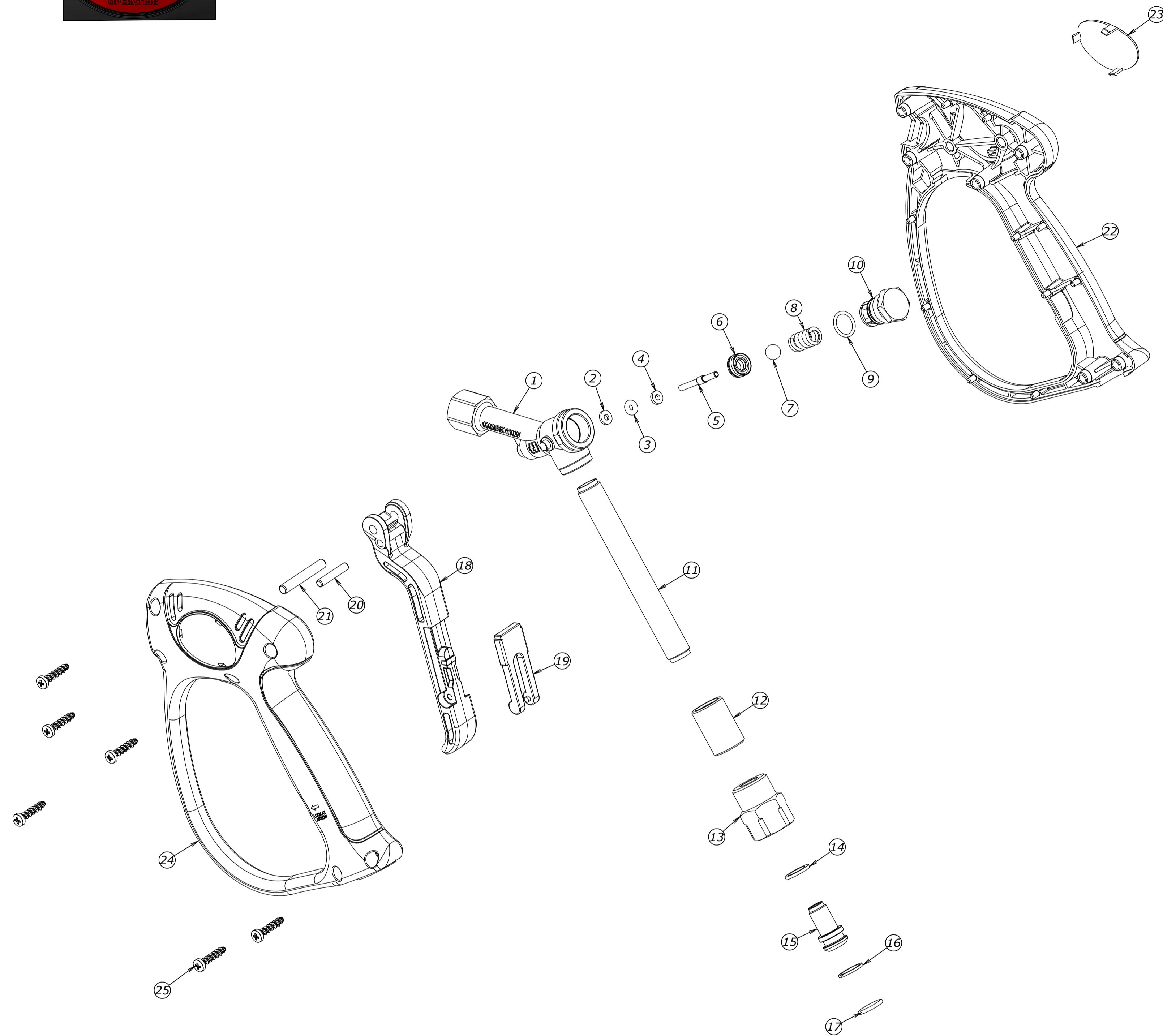
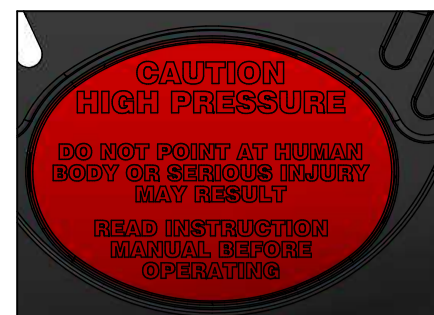
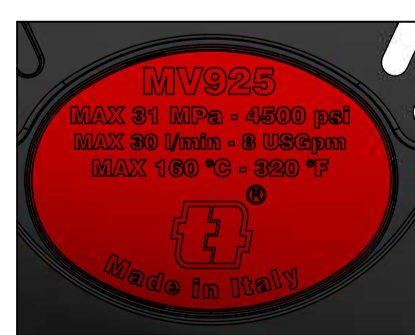


DETTAGLIO-DETAIL A



DETTAGLIO-DETAIL B



Num.	Codice	Descrizione Completa	Quant.	Kit 1	Kit 2	Kit 3	Kit 4
1	C00015011	CORPO MV925 G 1/4 F	1				
2	000117	ANELLO ANT. 3,10x 7,40x1,30 TB	1	x			
3	060143	GUOR 2,62X2,84 104 VITON 75 NERO	1	x			
4	R00300014	RONDELLA 3 X 7 X 1,5 OTTONE	1	x			
5	P00004004	PERNO PREMISFERA MV925	1	x			
6	S00301083	SEDE AL36 CONIATA CON OR NBR 90	1	x			
7	160013	SFERA 5/16 G28 AISI 420C HRC 56 MIN	1	x			
8	M00201052	MOLLA INOX 1,7 X 9,4 X 16,5	1				
9	0110750700	GUOR 1.5X11 NBR 90 NERO	1	x			
10	T00000096	TAPPO MV 925 VERS. STANDARD	1				
11	T00303045	TUBO FE Ø13 L104MM G1/4 ZB V2	1				
12	0115710090	RACCORDO SW STD G 1/4 - M10X1	1				
13	0115710160	RACCORDO GIREVOLE G 3/8 F OT	1				
14	0117740170	DIST. ANTIFRIZIONE 10X14X1,5	1				x
15	0116720200	VITE INNESTO GIREV. VERS. STD IX	1				
16	0117740120	A.A. 11,20X14,00X1,20 TBT	1				x
17	060130	GUOR 1.78X10.82 2043 VITON 75 NERO	1				x
18	L00002049	LEVA MV 925 NERA	1		x		
19	0100740520	SICURA MV951- ROSSA -	1		x		
20	P00004005	SPINA D.4X22 IX	1		x		
21	P00000087	PERNO PER LEVA MV925 D.5X33 IX	1		x		
22	S02301247	SCOCCA MV 925 DESTRA NERA	1			x	
23	T00200169	TARGHETTA MV 925 DX ROSSA RAL 3020	1			x	
24	S02301248	SCOCCA MV 925 SINISTRA NERA	1			x	
25	0116730010	VITE AUTOF. 4 X 19 UNI 9707	6			x	
26	T00200170	TARGHETTA MV925 SX ROSSA RAL3020	1			x	

Kit 1 - KIT RICAMBI SEDE GUARNIZIONI MV925 - Cod. 4019900025

Kit 2 - KIT RICAMBI LEVA MV925 SIC.ROSSA - Cod. 4019900026

Kit 3 - KIT RIC. MV925 SCOCCHE VITI - Cod. 4019900029

Kit 4 - KIT RIC. SW STD MV920-MV925-ML330 - Cod. 4019900020