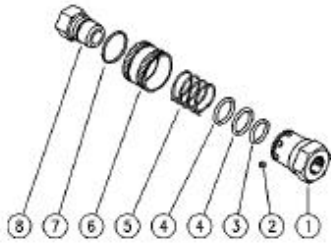




- 26.2035.51 ARS350 A ball-type nipple,sst,3/8F Bsp
- 26.2040.51 ARS350 A ball-type nipple,sst,1/4F Bsp
- 26.2045.51 ARS350 A ball-type nipple,sst,1/4M Bsp



- 26.2050.00 ARS350 B ball-type coupler,sst,3/8F Bsp
- 26.2050.20 ARS350 B ball-type coupler,sst,1/4 F Bsp
- 26.2050.25 ARS350 B ball-type coupler,sst,1/4 M Bsp

Pos.	P/N	Description	Q.ty	K1
1	26.2038.51	Housing -ARS350, 1/4F Bsp Sst. (1)	1	
1	26.2037.51	Housing -ARS350, 1/4M Bsp Sst. (2)	1	
1	26.2031.51	Housing -ARS350, 3/8F Bsp Sst. (3)	1	
2	14.7410.10	Ball, 3/16" Sst.	8	
3	10.3181.95	O-ring, 2,62x17,96 mm Vi 70	1	
4	10.3195.10	O-ring, 2,5x20 mm Vi 70	2	
5	26.2033.51	Spring, 1,4x29,1x25 mm Sst.	1	
6	26.2032.51	Ring nut, ARS350 Sst.	1	
7	26.2034.51	Snap ring, 1,4x26 mm Sst.	1	
8	26.2035.51	ARS350 A ball-type nipple,sst,3/8F Bsp	1	
8	26.2040.51	ARS350 A ball-type nipple,sst,1/4F Bsp	1	
8	26.2045.51	ARS350 A ball-type nipple,sst,1/4M Bsp	1	

(1) 26.2050.20 (2) 26.2050.25 (3) 26.2050.00